

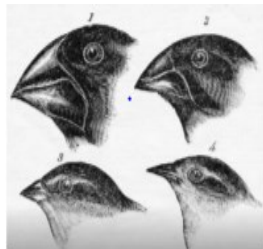
Year: 6
Term: Spring 1
Topic: Biology - Understand evolution and inheritance



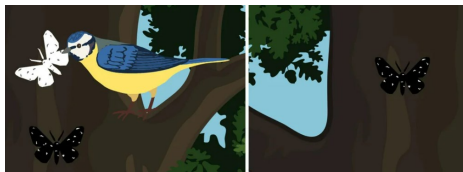
CHARLES DARWIN
(1809 - 1882)

Adaptation

- Living things have changed over time (**adaptation**).
- Animals adapt to the surroundings in which they live.
- Darwin observed that finches adapted to suit the different food sources available to them.
- Each type of finch had different beak sizes and shapes and ate different food sources.



Natural selection is when organisms that are best suited to their **environment** survive and pass on their **genetic traits**. At the same time, **organisms** that are less likely to survive tend to be eliminated from the **ecosystem**.



Inheritance

- When living things reproduce they pass on **characteristics** to their offspring. This is known as inheritance.
- You can **inherit** key characteristics from your parents like your eye colour, skin colour and height.
- All living things produce offspring of the same kind, but normally offspring are not identical to their parents; there are **variations** that make them all different.
- Some characteristics are inherited from the mother and some from the father.
- You don't inherit everything from your parents. For example, things like hairstyle and scars.



Fossils

Fossils are the remains of living things which inhabited the world millions of years ago. They are formed in sedimentary rock. Plants and animals get trapped in these layers revealing their shape. The evolution of a species happens over such long periods of time and evidence is usually taken from fossils.



Glossary

- adaptation** A change in a plant or animal's body to suit its location.
- environment** The conditions that surround an organism.
- Charles Darwin** An English scientist best known for his theory of evolution.
- evolution** A change that happens over time.
- fossil** The preserved remains, or traces of remains, of ancient organisms.
- gene** A unit of heredity which is transferred from a parent to offspring and is held to determine some characteristics of the offspring.
- natural selection** When the fittest, most adapted organisms survive and multiply whilst the least adapted die out.
- inheritance** When something is passed on to the next generation.
- organism** An individual animal, plant or single-celled life form.
- species** A group of similar organisms that are able to reproduce.