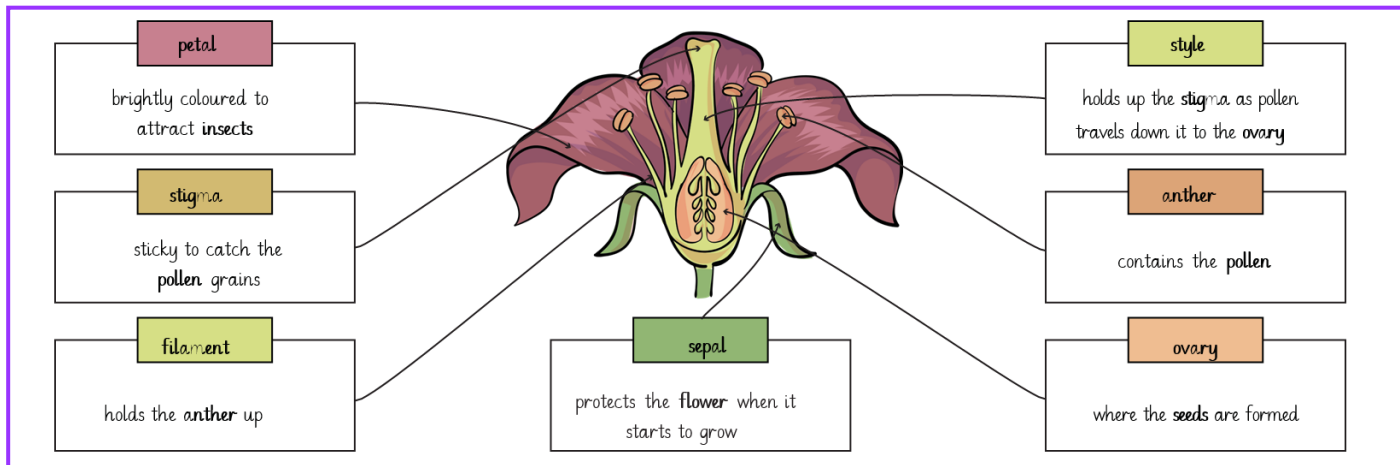


Year: 3  
 Term: Spring 2  
 Topic: Biology - Plants



Glossary

- bulb** A fleshy base of a plant that can grow another plant.
- dispersal** To distribute or spread over a wide area.
- flower** The seed bearing part of a plant that is usually surrounded by brightly coloured petals.
- leaf** Part of a plant that is typically flat and hangs off the stem.
- nutrients** Something that provides nourishment to a living thing.
- plant** A living organism.
- pollination** The transfer of pollen to allow fertilisation.
- roots** The part of the plant that attaches into the ground for support and nutrient collection.
- seed** A small part of a plant that can grow another plant.
- stem** The main stalk of a plant.
- tree** A woody plant.

**Pollination** is when pollen from the anther is transferred to the stigma. This can happen in different ways:

Wind can blow pollen from one plant to another. Pollinators such as bees and butterflies visit flowers to drink nectar. When they are there, pollen sticks to them, and they then transfer that pollen to the next flower. Once the pollen is transferred to the stigma, it travels down the style to the ovary, where the seed grows.

Seeds that have grown, need to be **dispersed** to grow new plants. This can happen in different ways:

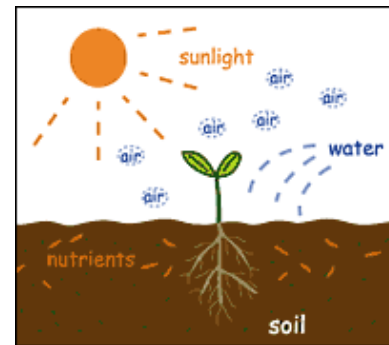
**Explosion** – some plants explode, making the seeds scatter.

**Water** – some plants that grow near water have seeds that float. Water will carry the seed until it is washed up.

**Animals** – some animals eat the fruit containing the seeds. When the animal excretes the waste, they also get rid of the seeds.

**Wind** – some seeds are light enough to be blown away and carried by the wind.

Plants need...



Plant lifecycle

