

Art and Design

Year: 1

Term: Spring 2

Topic Unit: How has transport changed over time?

"Every child is an artist." Pablo Picasso



Painting

Artist



I can recall the key features of Oliver Jeffers illustrations

Imitate



I can draw in the style of Oliver Jeffers, using line and shape.

Experiment



I can create watercolour wash background.

Plan



I can develop my ideas for an Oliver Jeffers inspired illustration

Create

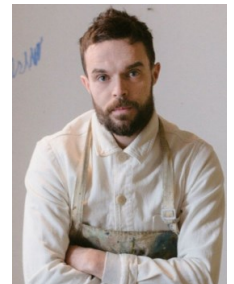


I can create my Oliver Jeffers inspired illustration.

Evaluate



I can review and revisit my creation.



Oliver Jeffers is a Northern Irish illustrator and author who is famous for his simple character design.

He uses a simple watercolour background with lots of space and faces of his characters are often shown using simple lines.

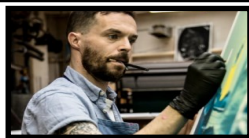
Glossary

background



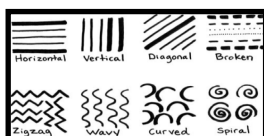
The part of the picture which is behind the main object.

illustrator



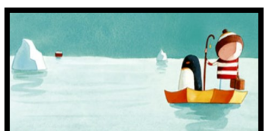
An artist who draws, paints or creates pictures inside books.

line



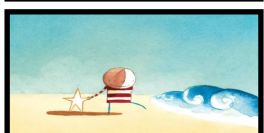
A mark made using a pencil, pen or a writing tool. It can be straight, curved, wavy, thick or thin.

space



The area around, between and inside objects.

watercolour wash



A smooth patch of watery paint on paper that is used to create a background.