

Year: 4

Term: Autumn 2

Topic: Biology - Animals including humans

Each type of tooth has a different role to play.

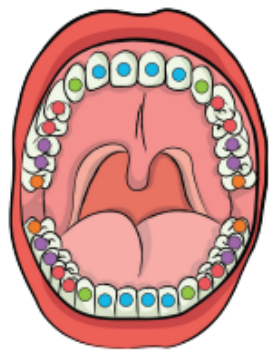
Incisors - We have eight incisors: four on the top jaw and four on the bottom. They are flat. They are used for biting and cutting food.

Canines - We have four canines: two on the top jaw and two on the bottom. They are sometimes referred to as 'fangs'. We use our canines to tear and rip our food.

Pre-molars - We have eight premolars: four on the top jaw and four on the bottom. They are next to our canines. They hold and crush our food.

Molars - We have eight molars: four on the top jaw and four on the bottom. The molars towards the back of our mouths. They are our largest teeth and are used to grind out food before we swallow it.

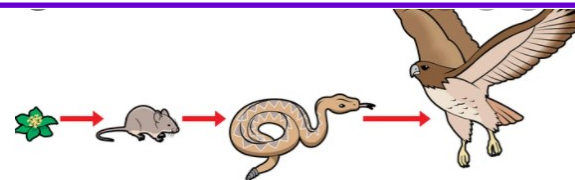
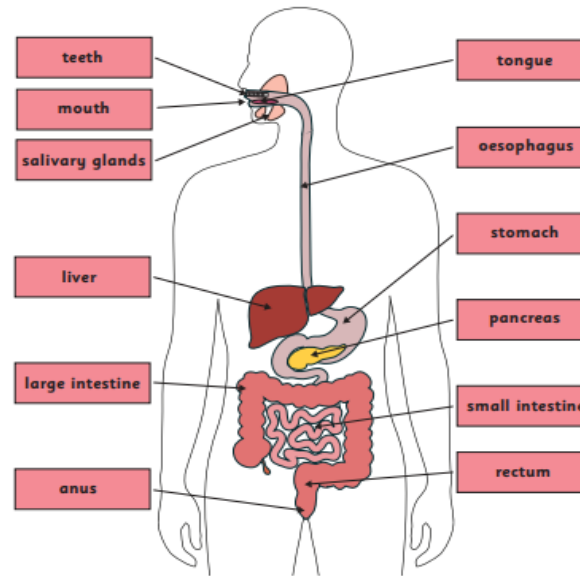
Wisdom - When we get older, most of us will grow our wisdom teeth. We have four wisdom teeth. They are just an extra molar, so they help with grinding our food.



Key

- incisors
- canines
- premolars
- molars
- wisdom

The **digestive system** is a series of organs that break down food so it can be absorbed by the body. It also gets rid of waste from the body.



Food chains show how energy is passed from one living thing to the next.

Producers get their energy from the sun (a plant in the chain).

Consumers get energy from the animals/plants they eat.

Glossary

- canines Four teeth which are tall and pointed and are used to hold and tear food.
- digestion This is designed to extract the goodness from food and get rid of leftovers.
- incisor Eight teeth at the front of the mouth which have sharp, straight edges and help cut up food.
- omnivore Animals that eat both plants and animals.
- predator An animal that hunts, kills and eats other animals.
- prey A term used to describe organisms that predators kill for food.
- saliva A lubricating digestive juice produced in the mouth.
- small intestines Where food is broken down and nutrients are absorbed into the blood
- stomach A rounded vessel in the body where acid and digestive juices break down food.

Animals that only eat meat are called **carnivores**.

Animals that only eat plants are called **herbivores**.

Carnivores and herbivores have different types of teeth, to suit the type of food they eat.