

Art and Design

"Every child is an artist." Pablo Picasso

Year: 5

Term: Summer 2

Topic Unit: How do river impact the lives of people around the world?



Painting

Artist



I can recall the key features of Monet's style of painting.

Imitate



I can maintain control and make deliberate brush strokes.

Experiment



I can experiment with impressionism techniques (scumbling, impasto strokes, wet on wet, unblended colours).

Plan



I can plan my landscape using impressionism techniques.

Create

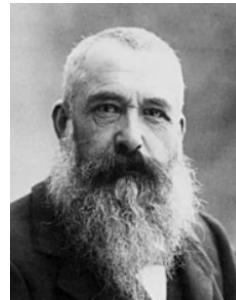


I can create my landscape using impressionism techniques.

Evaluate



I can review and revisit my creation.



Claude Monet was a pioneering French painter who started a style of painting called Impressionism. He captured light and changing the effects of atmosphere and colour by painting outdoors. Monet used short, quick dabs of paint instead of long, smooth lines.

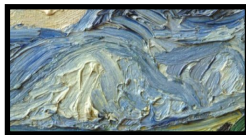
Glossary

complementary colours



Complementary colours are pairs of colours opposite each other on the colour wheel.

impasto



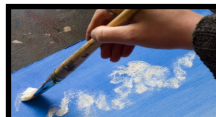
A painting technique where thick paint is applied to create a 3D texture, visible brushstrokes and a bumpy surface.

impressionism



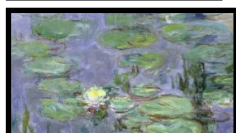
A 19th century art style that focused on capturing the changing effects of light, colour and atmosphere.

scumbling



An art technique where a thin, speckled layer of paint is applied over a dry base layer.

tone



The light and dark areas of a painting.